



## Historical User Manual

Guide to installing and using the  
Historical weather application

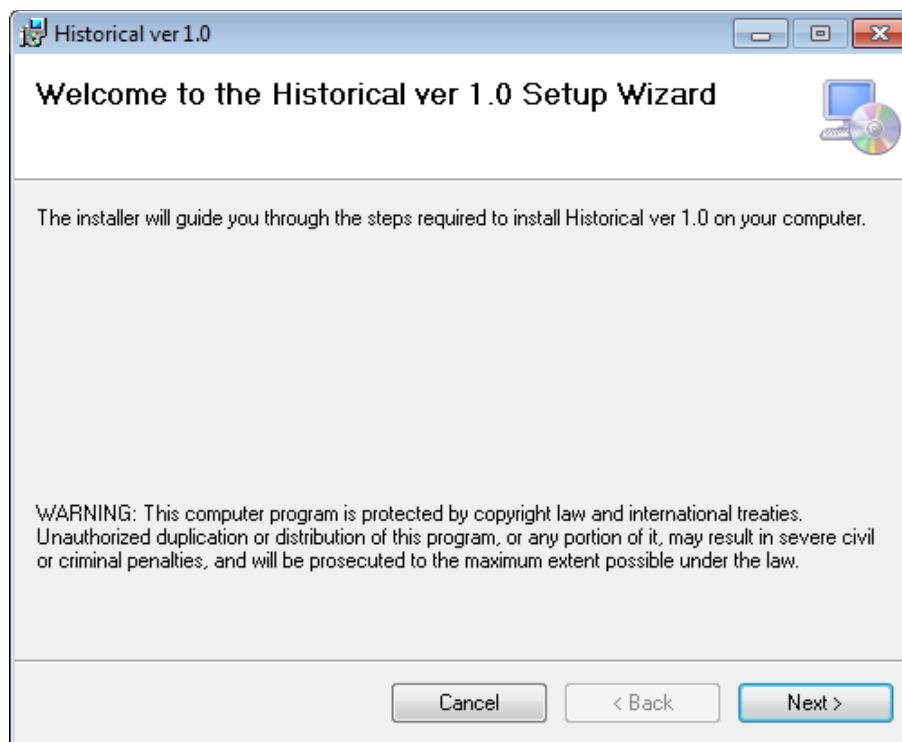
## Overview

The Historical weather application (HWA) works in conjunction with ET Basic software from Gwytech Systems Inc. Its purpose is to deliver daily evapotranspiration data so it can be used with ET Basic which in turns tracks moisture losses from evaporation and transpiration as well as gains in soil moisture from rainfall (if using on site tipping bucket rain gauge) and irrigation. This like all of our weather applications are to be used only with products (hardware and software) by Gwytech Systems Inc or those that are licensed by Gwytech Systems Inc.

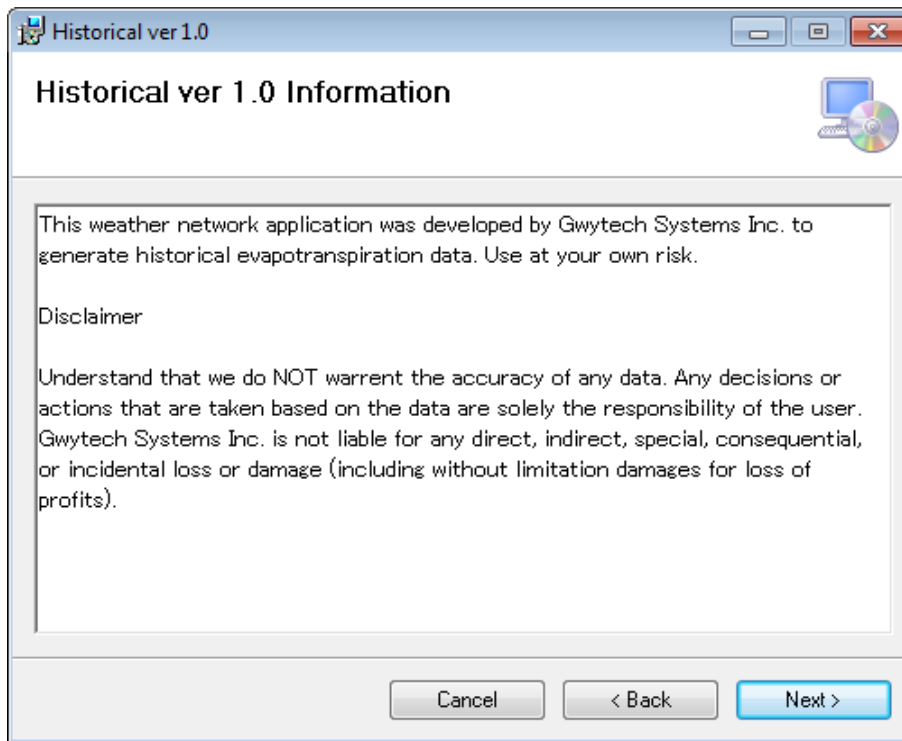
## Installation

It is assumed that the ET Basic software has already been installed on your computer. Below are shown the steps necessary to install this weather application once it has been downloaded from our website at <http://www.gwytech.com/downloads.aspx>

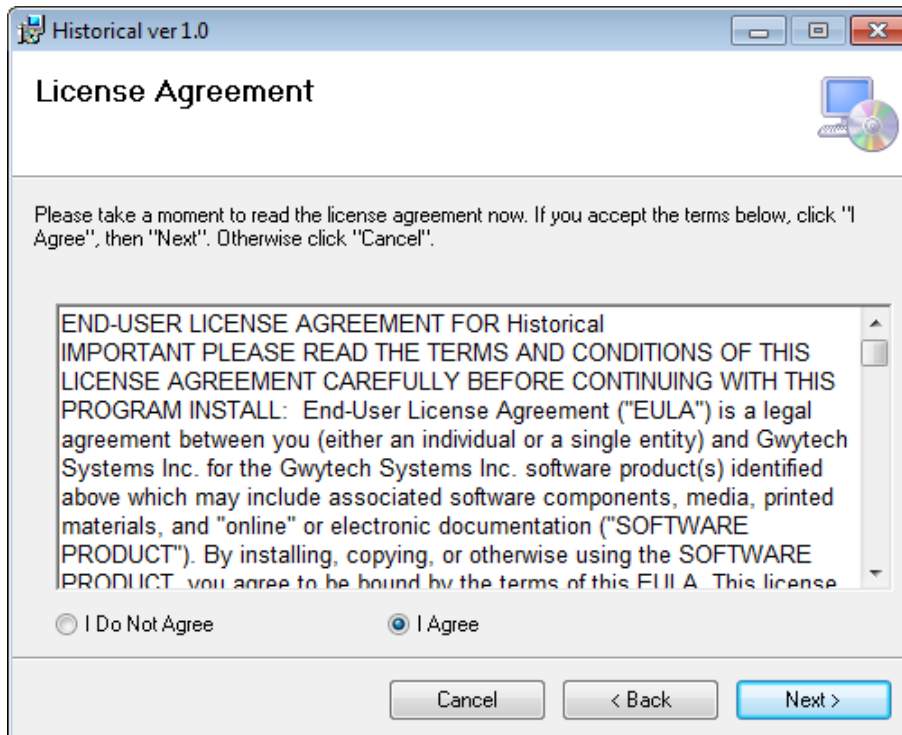
Find the location that this weather application was downloaded to then double click on it to open up the compressed folder. Inside the folder you will find the Historical.msi file. Double click it to start the installation process. You may need to give this application elevated permissions in order to install it on your computer.



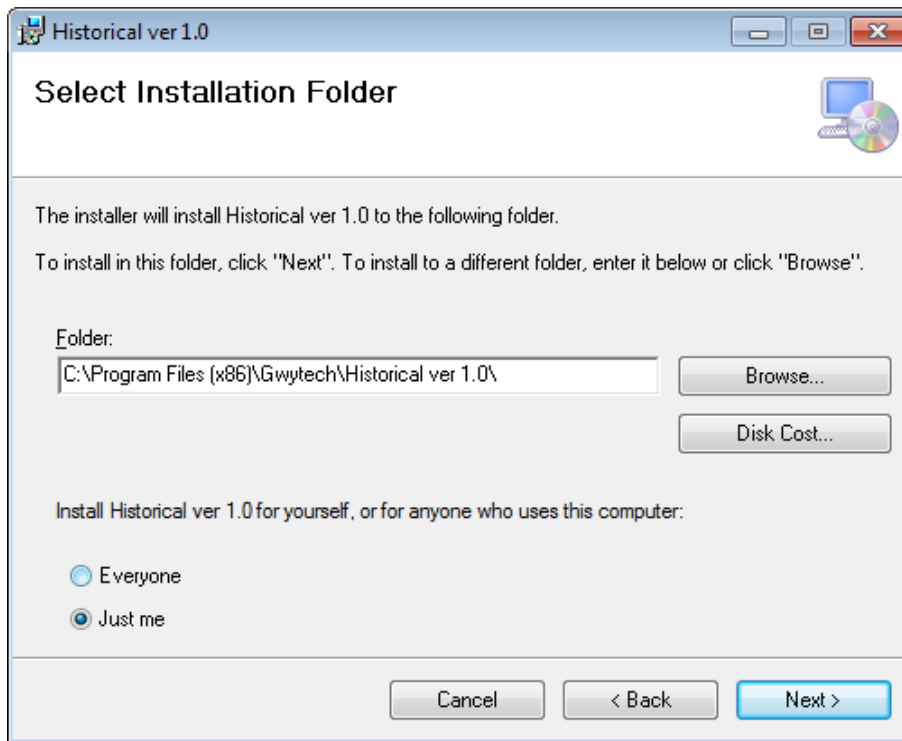
This is the Setup Wizard that needs to be followed in order to install this software.



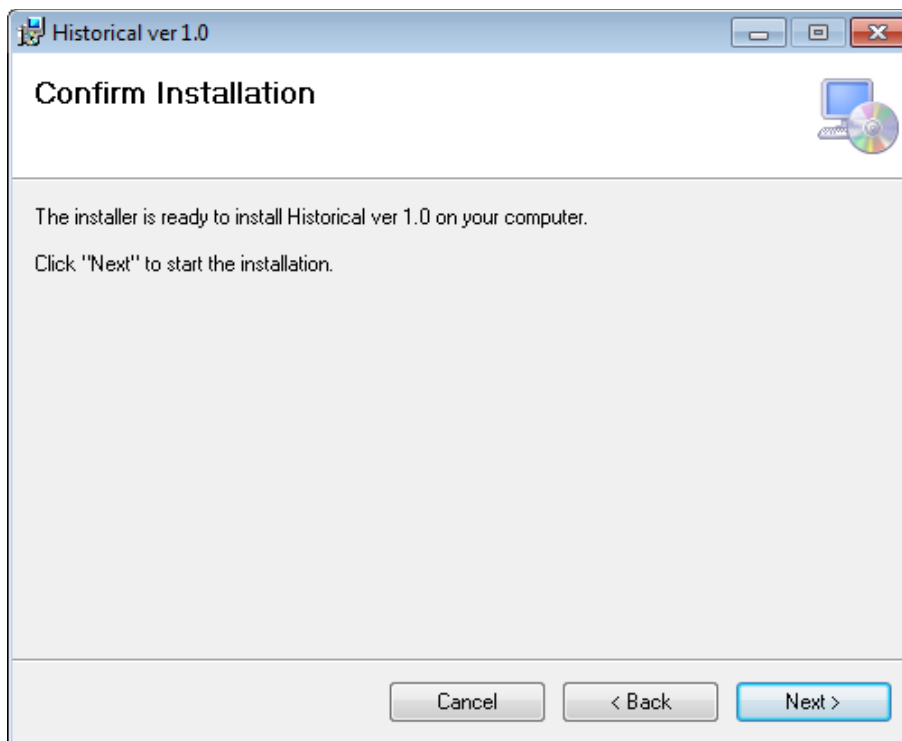
Next screen is some basic information about this weather application. Select Next to continue.



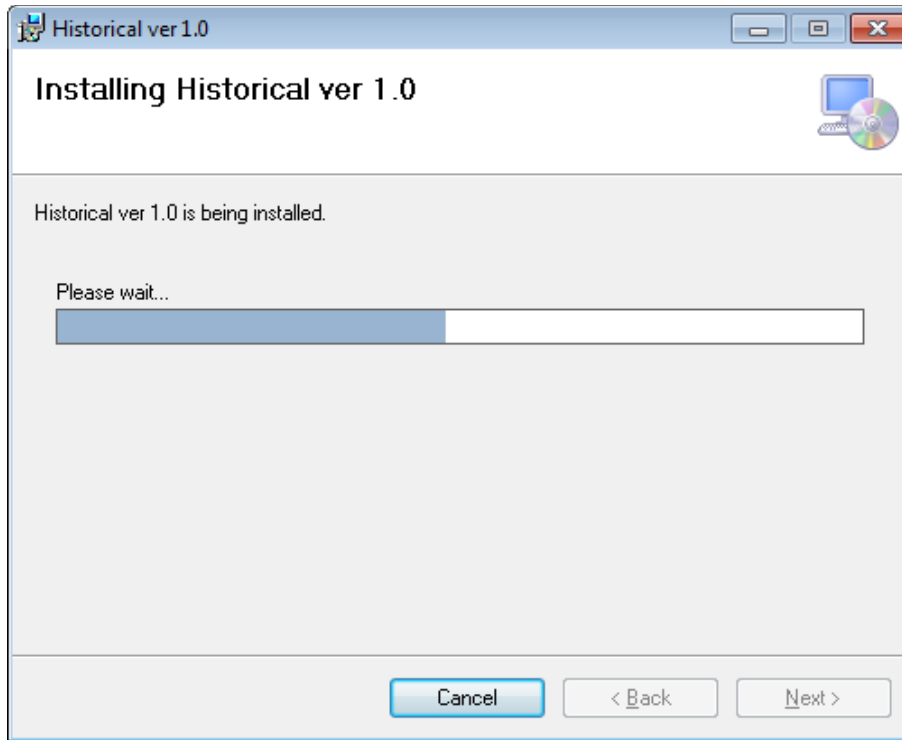
Now the license agreement, select I agree then next to continue.



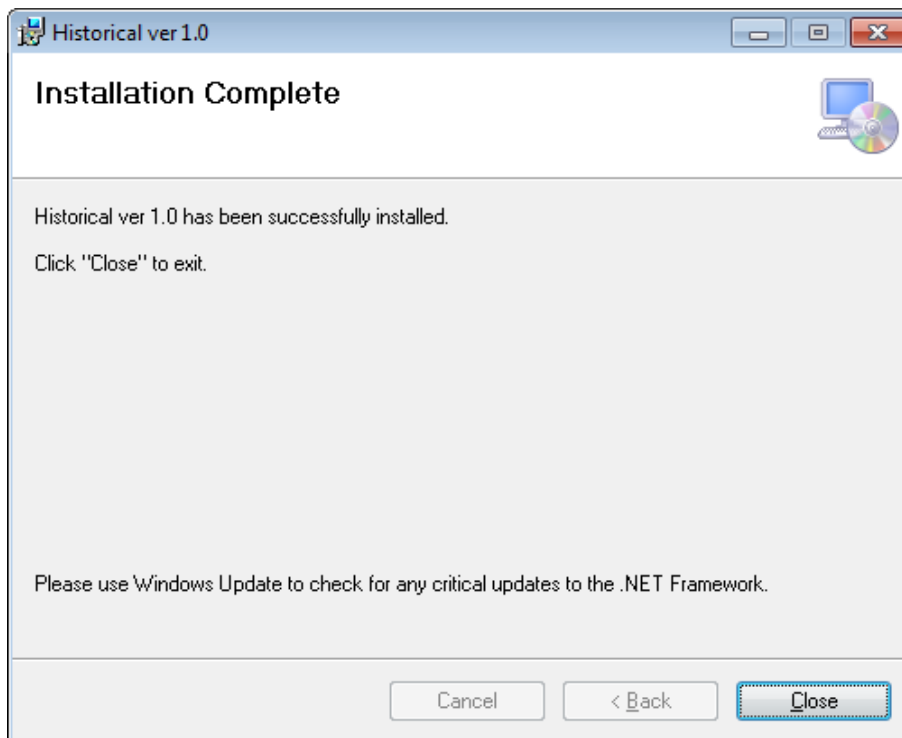
Here you can change the installation directory and disk drive. You should leave the defaults. Its best to allow only one person access to this application. Select Next to continue.



This step is just to confirm that you do want to install this weather application. Select Next to continue.



This screen show you the process of the installation. It should not take long unless your firewall is preventing it from installing.

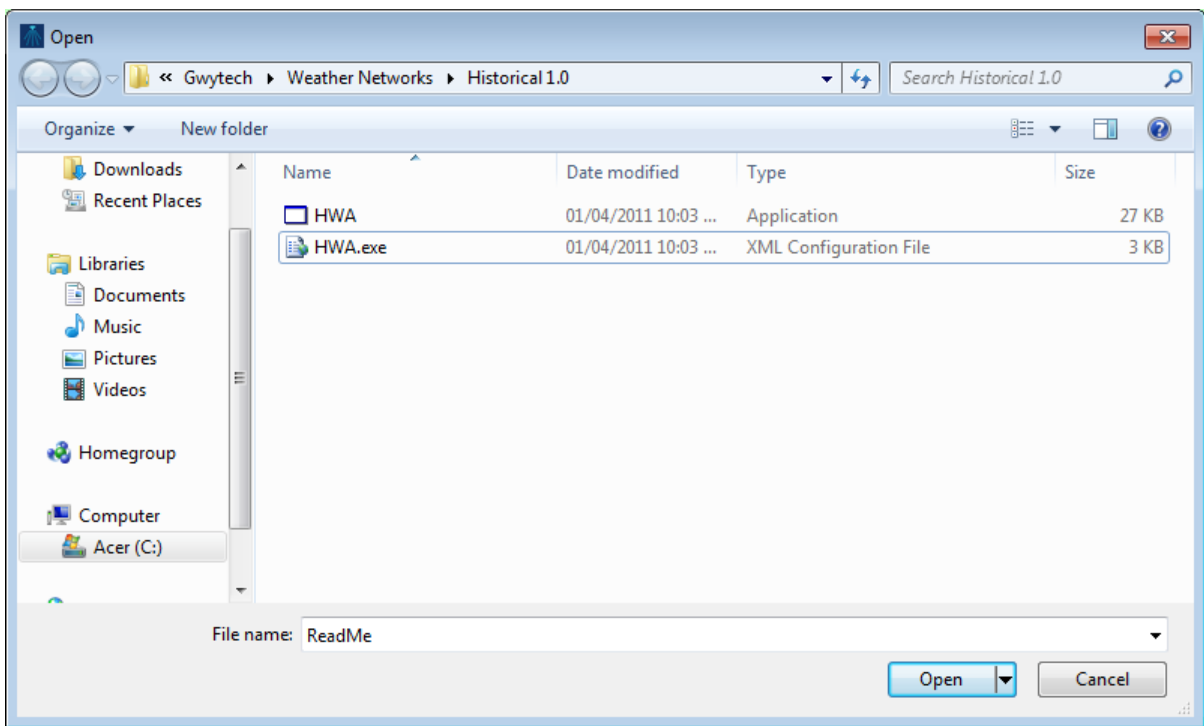


Once the installation has finished this is the screen that you will see.

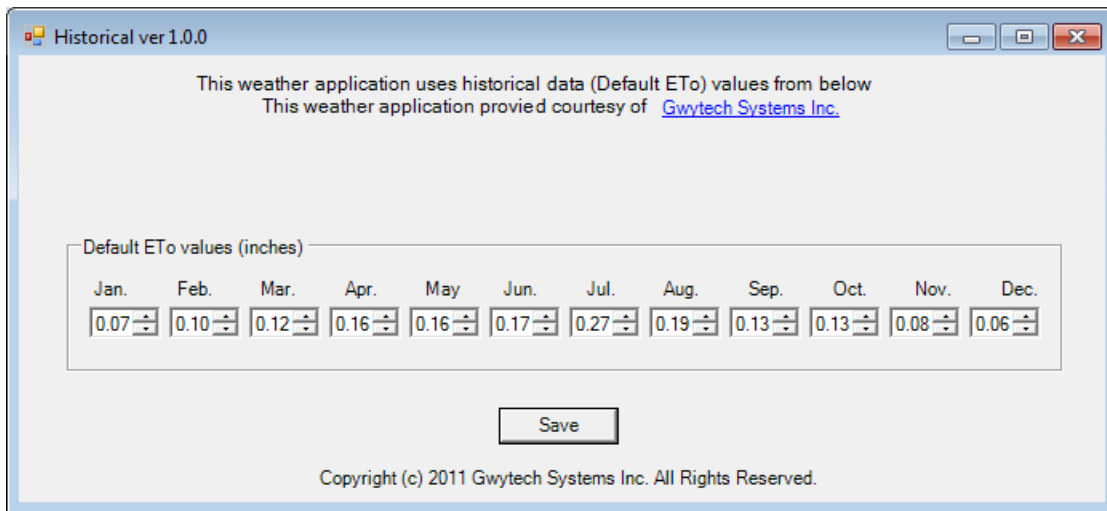
The weather application will not have an icon on the desktop or be accessible from the start menu. These applications are executed (run) by the ET Basic application as a console application. Their purpose is to retrieve weather data for ET Basic via the Internet. So, you will need to have a Internet connection that is always on.

## Configure and Using Weather Application

In order to use and configure this weather application it must be loaded from the ET Basic software application. The ET Basic application should have already been installed. Open the ET Basic application. Click the Irrigation Setup button and then the Open File button (see screen below). This brings up a window to allow you to select your weather application. You will need to go to the directory that has the weather application that you just installed. If you left the default settings it will be at Gwytech\Weather Networks\ from here select the name of the weather application you installed. See ET Basic User Manual if you need more information.



Select the name of your weather application (HWA). **Note:** select the Type application not the XML configuration File. Then select Open. Now save setting in the ET Basic application. To configure this weather application click on the Setup Weather Network button. You should see a screen similar to below.



These values are dependent of your location and are from historical records. You will need find the data for each month based on your location. The Eto values do not take into account rainfall. It is highly recommended that you use a on site tipping bucket rain gauge with the ET1 Timer.